

30.83 Acres M/L

**LAND AVAILABLE**

Listing #18512



# JASPER COUNTY IOWA

**PREMIER BUILDING SITE**

**Matt Adams**

IA LIC S59699000 | 515.423.9235  
Matt@PeoplesCompany.com

**Doug Bear, ALC**

IA LIC S67986000 | 515.745.3192  
Doug.Bear@PeoplesCompany.com

 **PEOPLES<sup>TM</sup>**  
COMPANY  
INTEGRATED LAND SOLUTIONS



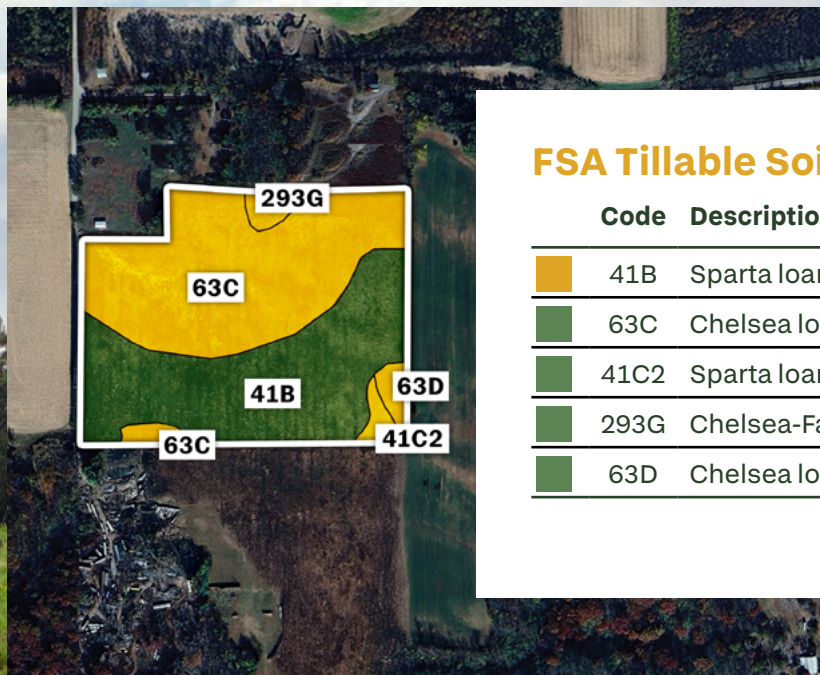
**Peoples Company** presents a premier building site comprised of 30.83 gross acres m/l located on a secluded dead-end road near Colfax, Iowa - just off Exit 155 from Interstate 80 and within a short commute to the Des Moines Metro. The relatively flat terrain offers an ideal setup for lifestyle buyers seeking a balance of seclusion, convenience, and outdoor enjoyment to either build a dream acreage or country estate, raise livestock, or those seeking open space and privacy combined with income-producing land close to town!

The farm includes 29.91 FSA cropland acres currently enrolled in the Conservation Reserve Program (CRP) through 2031 under the Iowa Pheasant Recovery SAFE Initiative (CP38E-2). This long-term contract generates \$5,299 annually—or \$177.16 per acre—and promotes quality upland habitat that supports strong pheasant populations and overall wildlife diversity. The established native grasses not only provide recreational benefits but also enhance soil health and long-term land stewardship.

A driveway entrance into the property is located on the northwest corner. In addition, there are utility services available at the road - MidAmerican Energy has an overhead power line combined with a 2.50" Central Iowa Water Association rural water line located along the east side of W 120th Street S. With a gentle terrain, essential utilities available, and income-producing potential, this tract is well-suited for a wide range of lifestyle and investment uses. The property is located in Section 34 of Poweshiek Township, Jasper County, Iowa.

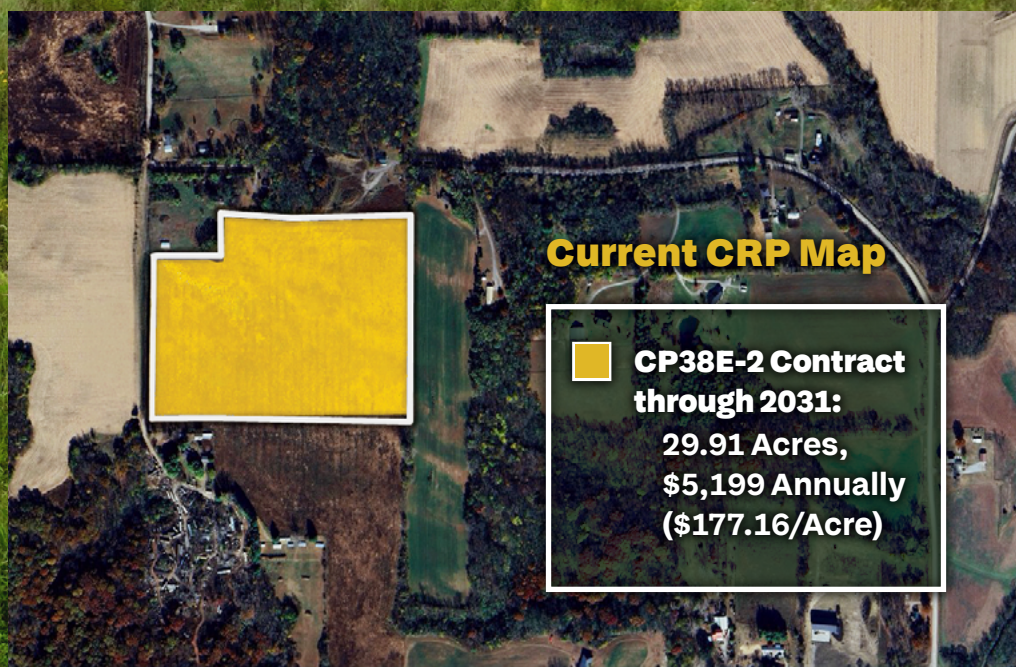






## FSA Tillable Soils Map

Code	Description	Acres	%	CSR2
41B	Sparta loamy sand	19.98	43.36	42
63C	Chelsea loamy fine sand	19.07	41.38	14
41C2	Sparta loamy fine sand	3.25	7.05	32
293G	Chelsea-Fayette-Lamont complex	2.05	4.45	5
63D	Chelsea loamy find sand	1.73	3.75	5
<b>Average:</b>				<b>26.7</b>



## Current CRP Map

**CP38E-2 Contract  
through 2031:**  
29.91 Acres,  
\$5,199 Annually  
(\$177.16/Acre)

**For more information  
regarding this listing,  
please contact:**

**Matt Adams**

IA LIC S59699000 | 515.423.9235  
Matt@PeoplesCompany.com

**Doug Bear, ALC**

IA LIC S67986000 | 515.745.3192  
Doug.Bear@PeoplesCompany.com





12119 Stratford Drive  
Clive, IA 50325



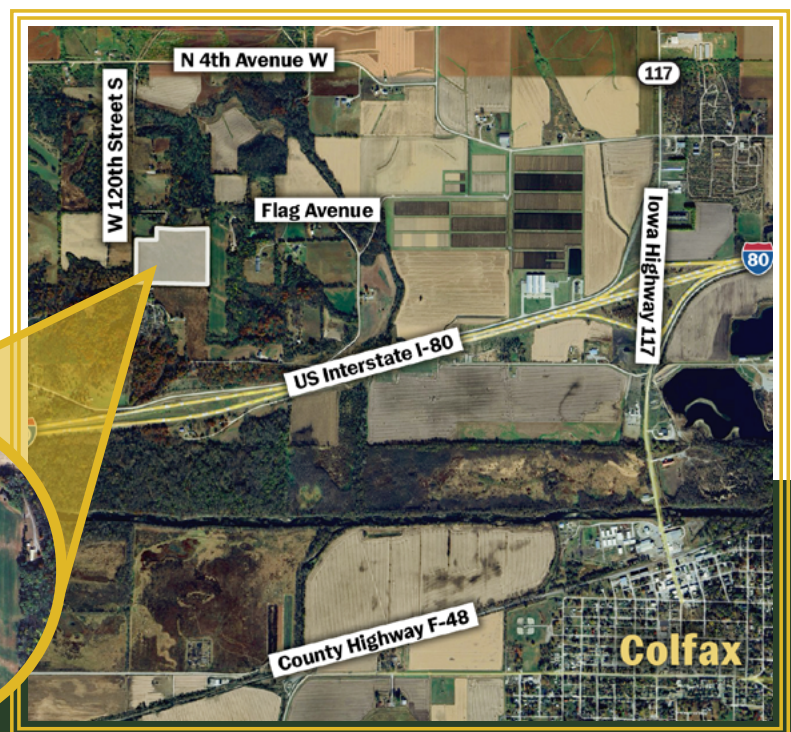
PeoplesCompany.com  
Listing #18512



SCAN THE QR  
CODE TO THE LEFT  
WITH YOUR PHONE  
CAMERA TO VIEW  
THIS LISTING ONLINE!

### From Colfax, Iowa (Exit 155):

Travel north on Iowa Highway 117 for 0.60 miles to Fleet Avenue. Turn left (west) and continue for approximately 0.90 miles, and turn left (west) onto N 4th Avenue W. Continue west for 1 mile and turn left (south) onto W. 120th Street N, which becomes W. 120th Street S for 0.50 miles. The property will be located on the east side of the road.



**Listing #18512**  
**West 120th Street South**  
**Colfax, Iowa 50054**

All information, regardless of source, is deemed reliable but not guaranteed and should be independently verified. The information may not be used for any purpose other than to identify and analyze properties and services. The data contained herein is copyrighted by Peoples Company and is protected by all applicable copyright laws. Any dissemination of this information is in violation of copyright laws and is strictly prohibited.